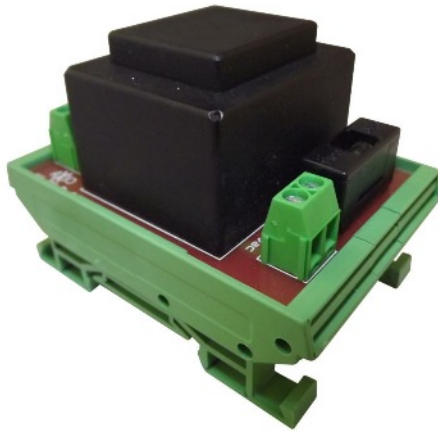


AX-TX-D

230Vac to 24Vac DIN Rail Transformers

AXIO



Product overview

The AX-TX-D is a range of cost effective DIN Rail mounted encapsulated power transformers that is designed to suit many applications. The units are normally used to provide power for DDC Controllers, IO modules, or valves/damper actuators. The transformers are fitted with fuses on both the input and output.

Features

- Terminal Blocks
- Rating 1.8, 6, 25 or 30VA
- Integral Fuses on input and output
- DIN Rail mounted

Product specifications

Input:	230Vac		
Output Supply:	24Vac		
Output Rating:	1.8VA, 6VA, 25VA or 30VA		
Typical Regulation:	25%		
Fuse Rating:	1.8VA	6VA	25 or 30VA
	Input	.25A	1A
	Output	.25A	1A
Fuse Size:	20mm		
Electrical Connections:	Terminals for 0.5-2.5mm ² Cable		
Ambient Temperature Range:	-10 to +50°C		
Dimensions:	1.8VA	82 x 34 x 58mm	
	6VA	82 x 58 x 52mm	
	Above	82 x 92 x 52mm	
Weight:	TBA		
Country of Origin:	United Kingdom		

Order codes

AX-TX-D6	230Vac to 24Vac Transformer 6VA - DIN Rail mounted
AX-TX-D25	230Vac to 24Vac Transformer 25VA - DIN Rail mounted
AX-TX-D30	230Vac to 24Vac Transformer 30VA - DIN Rail mounted
AX-TX-D60	230Vac to 24Vac Transformer 60VA - DIN Rail mounted

Order Online at:
www.annicom.com
Email orders and enquiries to:
Sales@annicom.com

ANNICOM

© Copyright Annicom 2014. All Rights Reserved

Annicom Ltd

Unit 21, Highview, Bordon, Hampshire. GU35 0AX

Tel: +44 (0)1420 487788 Fax: +44 (0)1420 487799

Email: sales@annicom.com Website: www.annicom.com

AX-TX-D

230Vac to 24Vac DIN Rail Transformers

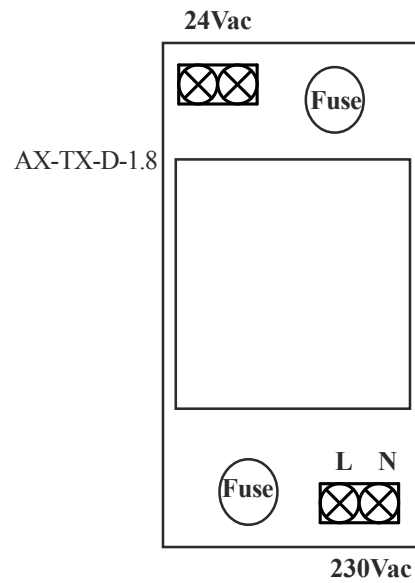
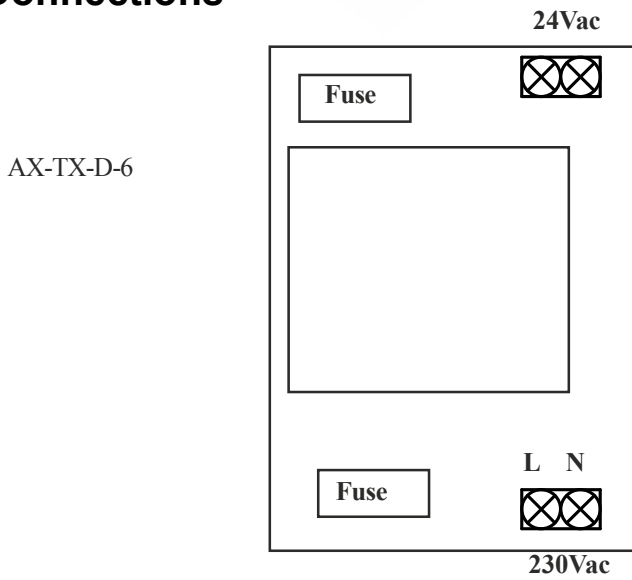


Installation

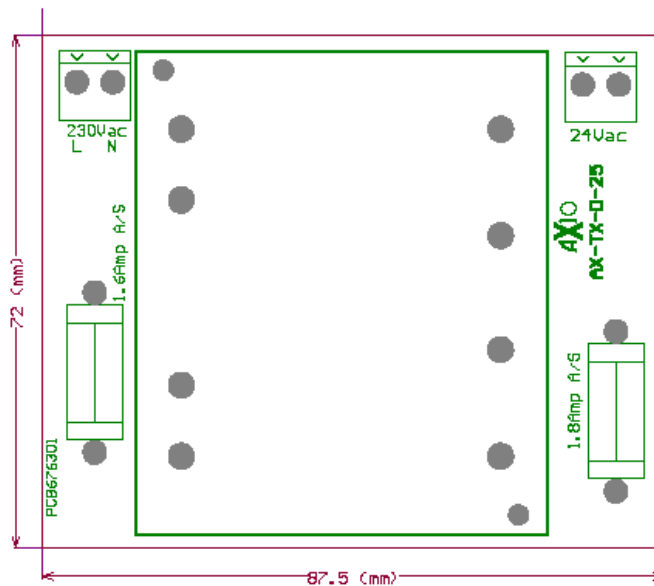
SAFETY NOTE:

Prior to Installation ensure that all power sources are disconnected and locked-out and remain locked-out during installation and set-up, as severe injury or death can result from Electric Shock due to contact with High Voltage Conductors. Ensure all installations are in compliance with applicable electrical codes and that the installation is carried out by qualified installers familiar with the relevant standards and proper safety procedures for high voltage installations. Never rely on status indication on any device to determine if power is present in a conductor.

Connections



AX-TX-D-25 to 30



Every effort has been taken in the production of this data sheet to ensure accuracy. Axio do not accept responsibility for any damage, expense, injury, loss or consequential loss resulting from any errors or omissions. Axio has a policy of continuous improvement and reserves the right to change this specification without notice.