



# Instromet Weather Systems Ltd

## Stand Alone Wind Speed monitor

Part number: 357 1000 006



## Document Contents:

- 1) Introduction
- 2) Package Contents
- 3) Contact
- 4) Wiring diagram
- 5) Display mounting
- 6) Display features / controls
- 7) Display operation
- 8) Troubleshooting Guide

### 1) Introduction.

Thank you for purchasing an Instromet Weather Systems Ltd Stand Alone Wind Speed monitor.

This unit's purpose is to supply the user with a real time visual read out of the current wind speed as measured by the external outdoor sensor.

The sensor output is in the form of a square wave with a frequency which has a direct relationship to wind speed of 1Hz per 1mph. The display then shows this frequency as a direct wind speed reading.

### 2) Package Contents.

Within the box you should find the following:

- 1 x External wind speed sensor
- 25m of 4 core cable
- 1 x 12v DC Adaptor
- 1 x Display

### 3) Contact:

Instromet Weather Systems Ltd.  
10b Lyngate Industrial Estate  
North Walsham  
Norfolk NR28 0AJ

Tel: (01692) 502800  
Fax: (01692) 502801  
e-mail: [sales@instromet.co.uk](mailto:sales@instromet.co.uk)

Website: [www.Instromet.co.uk](http://www.Instromet.co.uk)

#### Disclaimer

Instromet® products are designed to monitor current and previous weather conditions for domestic use and should not be considered as predictive weather forecasting equipment. Contact your regional Met Office centre if you need weather forecasting data ([www.metoffice.gov.uk](http://www.metoffice.gov.uk))

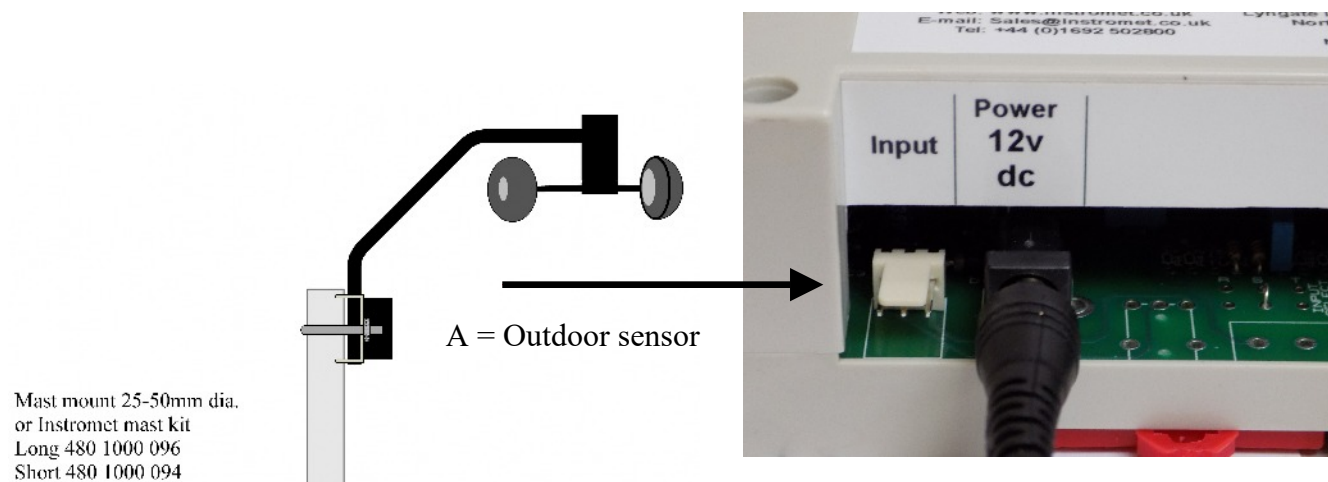
Our products are tested in-house for operation and functionality but have not been independently tested by a UKAS accredited laboratory. As part of our ongoing policy to improve the design and specification of our products, we reserve the right to change any detail given without prior notice. Instromet Weather Systems shall not be responsible for any liability or loss of any nature which may result from the use of any information provided in technical literature.

## 4) Wiring diagram

The Instromet stand alone wind speed monitor is quite simple to connect together.

Just connect the outdoor sensor to the terminal marked 'Input' via the three way plug on the sensor cable, and then just connect the 12v DC adaptor to the power connector.

The display should then illuminate and be ready for operation.



Mast mount 25-50mm dia.  
or Instromet mast kit  
Long 480 1000 096  
Short 480 1000 094

Connect the outdoor wind speed sensor using the 25m cable supplied. Ensure the colour coded cores of the 25m cable are wired to the matching colour cables on the sensor terminal block.

12v DC Plug in  
power supply  
500mA PSU  
Supplied

## 5) Display mounting

The display can be mounted in one of two ways.

Either via the holes in its base, which are 105mm apart and 5mm in diameter

Or

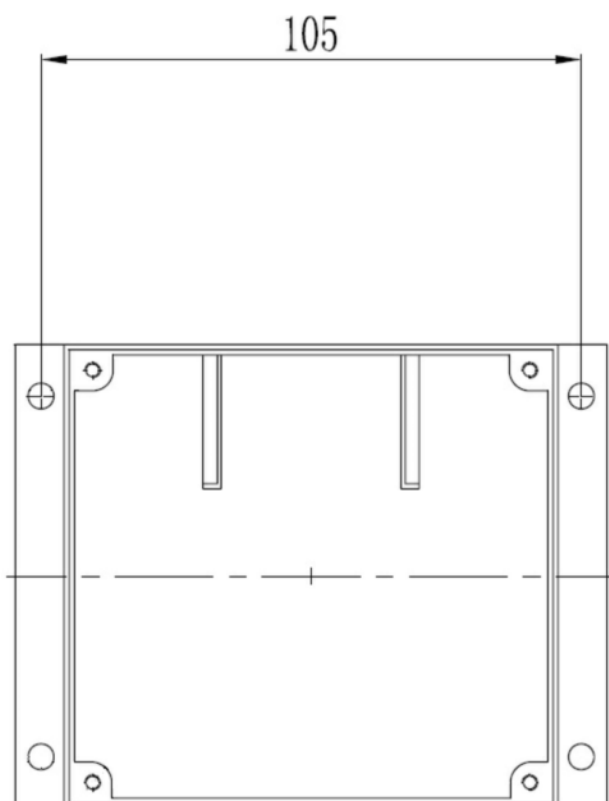
The display can be DIN rail mounted.

Instromet is able to offer DIN rail in 50cm and 100cm lengths. This option is ideal if you are considering expanding the system with others in the Instromet stand alone range, allowing them all to be mounted together uniformly.

DIN rail part numbers:

50cm - 30532/02

100cm - 30532/01



## 6) Display features / controls

The Instromet stand alone wind speed monitor utilises two variations of its screen. These two variations constantly switch between themselves every 10 seconds

The first variation shows current wind speed and the highest received gust reading and the second variation shows the current wind speed and the average wind speed reading.

Both secondary readings (Gust and Average) are based on the time period since being last manually reset.

Gust variation screen

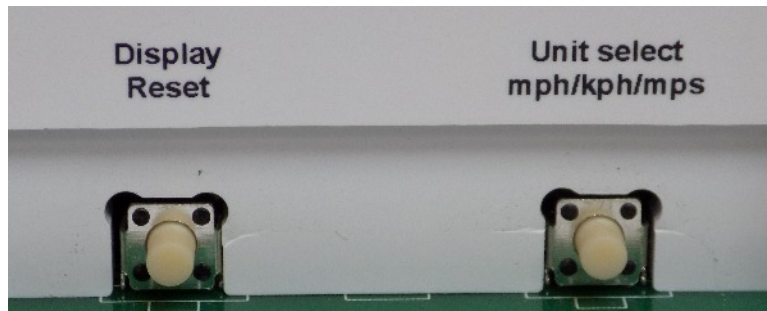


Average variation screen



Display controls.

In order to control the two aforementioned screens and other functions, the display uses two main adjustment points on its upper most surface as shown here.



## 7) Display operation

The below controls reference the above controls image:

A) Display reset button.

This button is as the name suggests, is used to reset the readings on the display (Gust and Average). Just hold the button for 2 seconds when the display is showing the parameter you wish to reset. ie when showing 'Gust' hold the button for two seconds to reset this value.

Note - The reset button has no bearing on the current reading due to this constantly updating in real time.

B) Unit select button.

This button changes the units which the wind speed parameters are displayed in.

Selectable units are: mph / kph / mps

## 8) Troubleshooting guide

Despite careful consideration when installing the unit if any strange phenomenon occur then the below may help.

1) Display dead – Check the 12v DC power adaptor plug is firmly connected to the display power input. Also check that the DC Adaptor is firmly connected and that the power is switched on at the wall.

2) No wind speed reading is being shown on the display:

Check that the wind sensor cable is firmly connected to the display input connector, if not then no count will be shown.

Check that the outdoor sensor connections are firmly connected paying close attention to the blue wire which carries the actual wind speed signal.

Check that the actual wind sensor cups are rotating. No wind speed will be displayed if the cups are stationary.

3) Pushing the reset button doesn't reset the readings - The Rest button has to be 'held' for at least two seconds to have an effect, try holding the button for longer.

If you are experiencing a different phenomenon to those described above or if the above does not cure the problem you are having then please contact our service department for further advice.

(Contact details can be found on the contents page of this document)